

TIBSHELF COMMUNITY SCHOOL UNIFORM

Ratified: Feb 24
(Tibshelf Policy)



Uniform Expectations

Tibshelf Community School students must maintain an exceptional standard of uniform at all times, from leaving their home in the morning, until they return home. Whenever students are wearing the school uniform, they are representing the school and the local community. If any item of uniform is damaged and there is a delay in replacing it, the school will aim to provide a temporary replacement to support families and ensure that our standards are maintained. Students are expected to comply with such a request and any refusal to do so will result in behaviour sanctions being put in place for defiance. Any uniform that is provided will be of a high quality, will be clean and fit appropriately.

If you are unsure whether or not certain items of uniform meet our uniform requirements, please check with the school before you purchase them.

There are certain items of our uniform that can only be bought from specific providers. These items include: School tie, blazer with badge and our School PE Kit. These items are available to be purchased from our external provider:

Sportswear International: purchases can be made from their webpage www.swischoolwear.co.uk/parentguide

We have made every effort to ensure that our uniform is affordable and of good quality. Should you come into hardship the funding below may be able to help you during an emergency or crisis situation and to support you to continue to live independently or cope with exceptional pressure when you have no other source of funding

Derbyshire Discretionary Fund (DDF)

<https://www.derbyshire.gov.uk/social-health/adult-care-and-wellbeing/benefits-debt-and-legal-matters/managing-money-and-debt/derbyshire-discretionary-fund/derbyshire-discretionary-fund-ddf.aspx>

Footwear

Students must wear shoes that are completely black, look professional and not have any logos or tags. The sole of the shoe must be dark. We understand that some retailers advertise trainers as school shoes, therefore should you be in any doubt please check with the school before they are purchased.

Shoes must be formal, not black trainers, boots, converse, pumps, sandals or sandals. Footwear with trainer-like soles, canvas, or rubber shoes are also not allowed.

Velcro fastening shoes, must still have the look of a formal shoe and not a trainer. Recommended shoes are shown below.



Blazers

Students must wear blazers at all times when they are inside the school building. Students may remove their blazers when in a lesson, with teacher permission, but they must be put back on before leaving the classroom. Hoodies, sports clothing and tracksuit tops are not allowed to be worn with the school uniform. Students who wish to wear an additional layer over their blazer should bring a suitable outdoor coat.

Skirts and Tights

If your child chooses to wear a skirt, it must be black and straight or pleated. When worn the skirt must be **knee length, with the bottom of the skirt in line with the top of the student's patella (kneecap)**. Should tights be worn they must be black and professional looking. Leggings are not permitted.



Trousers

In all years trousers must be formal, plain black and tailored with no pattern or zips. All pockets must go into the trousers and not be visible from the outside.



The following trousers are not acceptable in any year group:

- Combat trousers
- Trousers with patch/studded pockets
- Leggings
- Jeans or chinos
- Any other inappropriate fashion trousers.

Belts

If a belt is worn, it must be plain black with no patterns or indentations. The belt must be made from leather or a similar leather look material. The buckle must be basic, look professional and display no logo.

Shirts

Shirts must be completely white with a collar. Logos on shirts are unacceptable. The top button must be present and fastened at all times. Shirts must be tucked into trousers/skirts. Sleeves on shirts and blazers must always be rolled down whilst walking around the school. Any item of clothing worn underneath the shirt must not be visible through the shirt.

Jumpers (Optional)

In all years students may wear a plain black **V-neck** jumper beneath their blazer, we do not require this to have the school logo on.

Shorts

Shorts can be worn in the **summer term only**. Shorts should be tailored, knee length and black. Sports shorts, lycra or denim shorts are not permitted

Ties

Students must wear a school clip on tie at all times. This must be clipped onto the top button of the student's shirt, which must be fastened.

Outdoor Coats

Outdoor coats of any type must not be worn instead of or underneath the school blazer anywhere on the school site. Coats or Jackets of any type must not be worn inside classrooms. Please note hoodies, leather or denim outdoor coats/jackets are not acceptable.

Bag

The school expects all students to bring a bag to the school every day. We recommend a school bag that is able to hold an outdoor coat, student planner, A4 exercise books/folders, writing equipment and PE kit in it.

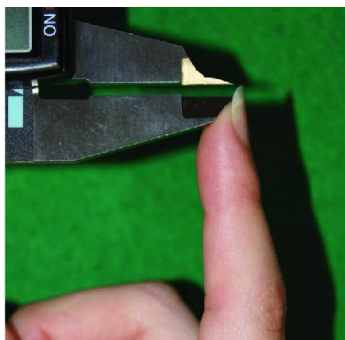
General Appearance Expectations

Hair

Hair needs to be smart and professional. Extreme haircuts and colours are not permitted (only natural looking colours are allowed). Extreme hair styles and/or shaved lines/patterns, are also not permitted for any student. Pupils will be asked to rectify these issues as soon as possible and parents will be contacted.

Nails

No false nails should be worn and for health and safety reasons, nails should be no deeper than 3mm (the depth of a one-pound coin).



Head Scarves

A plain black head scarf may be worn for religious observance or medical conditions.

Make-up

Make-up must be light and natural looking, which would be suitable in a professional environment. Students may be asked to remove make up if it doesn't fit this standard. The school will make a judgement as to what's suitable and consult parents with the decision.

Jewellery

The following are acceptable:

- One pair of earrings and a wristwatch are allowed.

The following are not permitted:

- Facial piercings (clear spacers or retainers are not allowed at any time)
- Other jewellery – (including rings, bracelets, bangles)
- Sleepers, stretchers, spike earrings or hoops

PE Kit

Our uniform providers are Sportswear International (www.swischoolwear.co.uk/parentguide) The following items must be purchased from our providers:

Students must purchase the Aptus Training top (T-shirt) and Aptus ¾ Zip top (Drill top) from the uniform suppliers. Students must bring their PE kit to every PE lesson and students are not permitted to 'borrow' kit.

Students could purchase additional items of the school PE Kit from our uniform supplier (Sportswear International) however shorts and training bottoms can be purchased from elsewhere but must be predominantly black and with limited colours or logos on.

The following are acceptable:

- Hair bobble
- Bobble hats
- Gloves
- Layers / skins can be worn UNDER the school PE kit in cold weather.

The following are not permitted:

- Jewellery must be removed
- Baseball caps
- Any shorts or trousers that are not black

