

TIBSHELF COMMUNITY SCHOOL EXTREMISM & RADICALISATION POLICY

Ratified: Nov 25
(DCC Policy)





Purpose

For Tibshelf Community School to fulfil the Prevent duty, it is essential that our staff can identify children who may be vulnerable to radicalisation and know what to do when they are identified. Protecting children from the risk of radicalisation should be seen as part of our wider safeguarding duties and is similar in nature to protecting children from other harms (e.g., drugs, gangs, neglect, sexual exploitation), whether these come from within their family or are the product of outside influences.

We should also build pupils' resilience to radicalisation by promoting fundamental British values and enabling them to challenge extremist views. **It is important to emphasise that the Prevent duty is not intended to stop pupils talking about or debating controversial issues** but to tackle the ideological causes of terrorism. In School, we want to provide a safe space in which children, young people and staff can understand the risks associated with terrorism and develop the knowledge and skills to be able to challenge extremist arguments at an age-appropriate level.

What is Extremism?

"Extremism" is the promotion or advancement of an ideology based on violence, hatred or intolerance, that aims to;

1. Negate or destroy the fundamental rights and freedoms of others; or
2. Undermine, overturn or replace the UK's system of liberal parliamentary democracy and democratic rights; or
3. Intentionally create a permissive environment for others to achieve the results in the points above

Extremism is relevant if it can be reasonably linked to terrorism or is used to encourage people into participating or supporting terrorism.

What is Radicalisation?

Radicalisation refers to the process by which a person comes to support terrorism and extremist ideologies associated with terrorist groups. Individuals can be 'radicalised' by other people (sometimes by people they trust, sometimes by strangers, in real life or online), or could be 'self-initiated' by things they read on the internet or influenced by world events they see in the news.


What is Terrorism?


Terrorism is the use or threat of action, both in and outside of the UK, designed to influence any international government organisation or to intimidate the public. It must also be for the purpose of advancing a political, religious, racial, or ideological cause. It is important to note that in order to be convicted of a terrorism offence a person doesn't actually have to commit what could be considered a terrorist attack. Planning, assisting and even collecting information on how to commit terrorist acts are all crimes under British terrorism legislation.

Duties and Responsibilities

Section 26 of the Counter Terrorism and Security Act 2015 places a duty upon Local Authorities and all specified settings including schools in the exercise of their functions to have "due regard to the need to prevent people from being drawn into terrorism".

We are required in our functions under section 26 to:

- Know about and identify early indicators in pupils.
 - Develop the confidence to challenge and intervene.
 - Assess the risk of our pupils being drawn into terrorism and terrorist ideology.
 - Have clear protocols & keep records.
 - Be monitored by Ofsted in how we exercise these duties.
- 



The statutory guidance on the Prevent duty summarises the requirements on us in terms of four general themes: risk assessment, working in partnership, staff training and IT policies.

Risk Assessment

We will assess and monitor the risk of children being drawn into terrorism; the general risks may vary from area to area, and according to their age, local threat, and proportionality. This School recognises we are in an important position to identify risks within our local context.

- We should be aware of the increased risk of online radicalisation, as extremist and terrorist organisations seek to radicalise young people through the use of social media and the internet.
- There is no single way of identifying an individual who is likely to be susceptible to a terrorist ideology. As with managing other safeguarding risks, we should be alert to changes in children's behaviour which could indicate that they may be in need of help or protection. Children at risk of radicalisation may display different signs or seek to hide their views.
- School staff should use their professional judgment in identifying children who might be at risk of radicalisation and act proportionately.
- Even very young children may be vulnerable to radicalisation by others, whether in the family or outside, and display concerning behaviour. The Prevent duty does not require us to carry out unnecessary intrusion into family life but as with any other safeguarding risk, we must take action when we observe behaviour of concern.
- School Premises Lettings are vetted and monitored to ensure that the school buildings and resources are not used to promote terrorist or extremist activity.

This [guidance](#) on how to complete a risk assessment is helpful for understanding national and local risks and proportionate responses.


Working in Partnership

The Prevent duty builds on existing local partnership arrangements.

- We will follow the procedures set out by the Derby and Derbyshire Safeguarding Children's Partnership with reference to Safeguarding Children and Young People who are deemed to be vulnerable to Violent Extremism
- We will work with the Local Authority and with other agencies in making sure we undertake our duties under Prevent to identify and support children and young people.
- Effective engagement with our parents/family is also important as they are in a key position to spot signs of radicalisation. It is important to assist and advise families who raise concerns and point them in the right direction for support.
- Information sharing is a key part of safeguarding learners vulnerable to radicalisation. Information sharing will be treated in the same way as wider safeguarding.

Staff Training

The statutory guidance refers to the importance of Prevent awareness training to equip staff to identify children and young people at risk of being drawn into terrorism and to challenge extremist ideas.

- We will ensure that all staff, including volunteers and governors, complete training on Prevent as part of their safeguarding training. This will include threats, risks and vulnerabilities that are linked to extremism and radicalisation; early indicators, responding to and reporting concerns.
 - We will follow the recommendations of the Local Authority and ensure staff undertake Prevent training every two years.
- 



IT Policies

The statutory guidance makes clear the need for schools to ensure that children are safe from terrorist and extremist material when accessing the internet in school.

- We will ensure that suitable filtering is in place.
- Internet safety is integral to our IT curriculum, and we will provide training for our staff and learners where appropriate.
- We are aware of the increased risk of online radicalisation, as extremist and terrorist organisations seek to radicalise young people using social media and the internet. We will try and help our pupils to keep safe online and consider the impact of social media networking sites with additional consideration to the threat of exposure to extremism and radicalisation.
- We will work in accordance with the guidelines around monitoring and auditing staff and learner usage of the internet when in School.

We will also consider.

Visitors and the use of School premises

- Visitors and contractors will be subject to Identification checks which will include clarification of the purpose of their visit.
- We may undertake further precautions in allowing visitors and contractors on our premises.
- We will ensure the school premises will not be used to give a platform to extremists.

The Role of the Curriculum

We will work to ensure that our pupils are skilled and equipped to be resilient and resist involvement in extreme or radical activities. Therefore, we recognise the need to build resilience in our pupils to make them less susceptible. We aim to include in the curriculum learning around threat and risk and online radicalisation.

We will therefore provide a broad and balanced curriculum within which we aim to support pupils, Spiritual, Moral, Social and Cultural development (SMSC). SMSC development is promoted through all our subjects, including the ethos of our School where development of positive attitudes and values is central to everything we do.


Values underpinning public life in the UK have been summarised as democracy, the rule of law, individual liberty, mutual respect, and the tolerance of those with different faiths and beliefs. It is important that our pupils understand this through different approaches using a balanced and broad curriculum. This supports our pupils to be responsible citizens and prepares for an adult life living and working in Britain which is diverse and changing.

Our School will ensure the promotion of British values and that these efforts are inclusive and promote unity between pupils, parents/carers, and the local community. We will ensure that Prevent is embedded across the setting, in a proportionate way to risk.

Indicators, Help and Support

There are many factors that can make someone vulnerable to radicalisation. They can apply to any age, social class, religion, ethnic or educational background. More important than any one specific sign is the sense that something is not quite right with the person you're worried about. You could spot one sign or a combination of signs that are increasing in intensity. Sometimes they can be indicators of other underlying issues or challenges that are not connected to radicalisation.

Help identifying a concern can be found on the following websites.

- [Act Early](#)
 - [Educate Against Hate](#)
 - [Safer Derbyshire](#)
- 



For advice relating to a particular issue follow the referral process in Appendix A

Referral Procedure

We will treat any worry or concern that a child or young person in the school may be exposed to possible extremism, extremist ideology and or radicalisation as a possible safeguarding concern and will seek advice where appropriate.

All Prevent concerns and incidents will be brought to the attention of the Designated Safeguarding Lead, who will follow the agreed procedures, as described in Appendix A.

Where a referral is needed, we will use the [Prevent referral form](#) to share Prevent related concerns about any child, young person or adult within the school, with the Police Prevent Team, as described in Appendix A.

Where a concern or incident is judged to be immediate and serious an appropriate lead in the school will contact the Police directly using 999.

We will ensure that we keep accurate and up to date records of any additional safeguarding concerns in line with our school's recording policies.

We understand that the Channel Programme is an element of the Prevent Strategy aimed at stopping vulnerable people being drawn into terrorism. We understand in order to support children and young people, individuals we refer to Prevent may receive a programme of support from this multi-agency group and we may be asked to work with and attend Channel Panel(s) to progress this support.

Where concerns about the impact of radicalisation or extremism indicate that a child or young person is additionally vulnerable and has complex needs or they are at risk of significant harm, a referral should be made to children's social care. (See [Making a referral to Children's Social Care](#)).

Related Policies and guidance

This Extremism & Radicalisation Policy is linked to the following policies:


- Safeguarding & Child Protection Policy
- Equality & Diversity Policy
- Anti - bullying Policy including Cyberbullying.
- Behavioural Management Policy
- Online Safety Policy
- British values statement
- Lettings Policy


Furthermore, we will follow the procedures set out by the [Derby and Derbyshire Safeguarding Children's Partnership](#) with reference to [Safeguarding Children and Young People who are deemed to be vulnerable to Violent Extremism](#):

National guidance in relation to Keeping Children Safe in Education.

- [Keeping Children Safe in Education](#)
- [Working together to safeguard children](#)
- [Information sharing advice for safeguarding practitioners](#)

In tackling extremism and radicalisation, we will take account of the following national guidelines and legislation:

- [Counter-terrorism strategy \(CONTEST\) 2023](#)
 - [Prevent duty guidance: Guidance for specified authorities in England and Wales 2023](#)
 - [The Prevent Duty, DfE Departmental advice for schools and childcare providers 2015](#)
- 

- 
- [Channel Duty Guidance 2023](#)
 - [Counter Terrorism & Border Security Act 2019](#)
 - [Use of Social Media for online radicalisation](#)

Management of this Policy

The Head Teacher/Principal of our School will implement the policy and will ensure staff including volunteers and governors have read this policy and understand their responsibilities.

The Governing Body/Proprietor will oversee the policy; ensure its implementation and compliance to statutory duties reviewing its content on an annual basis.

We will undertake a regular audit and review of this policy and consider any changes in guidance /legislation how these changes will be implemented within the school.

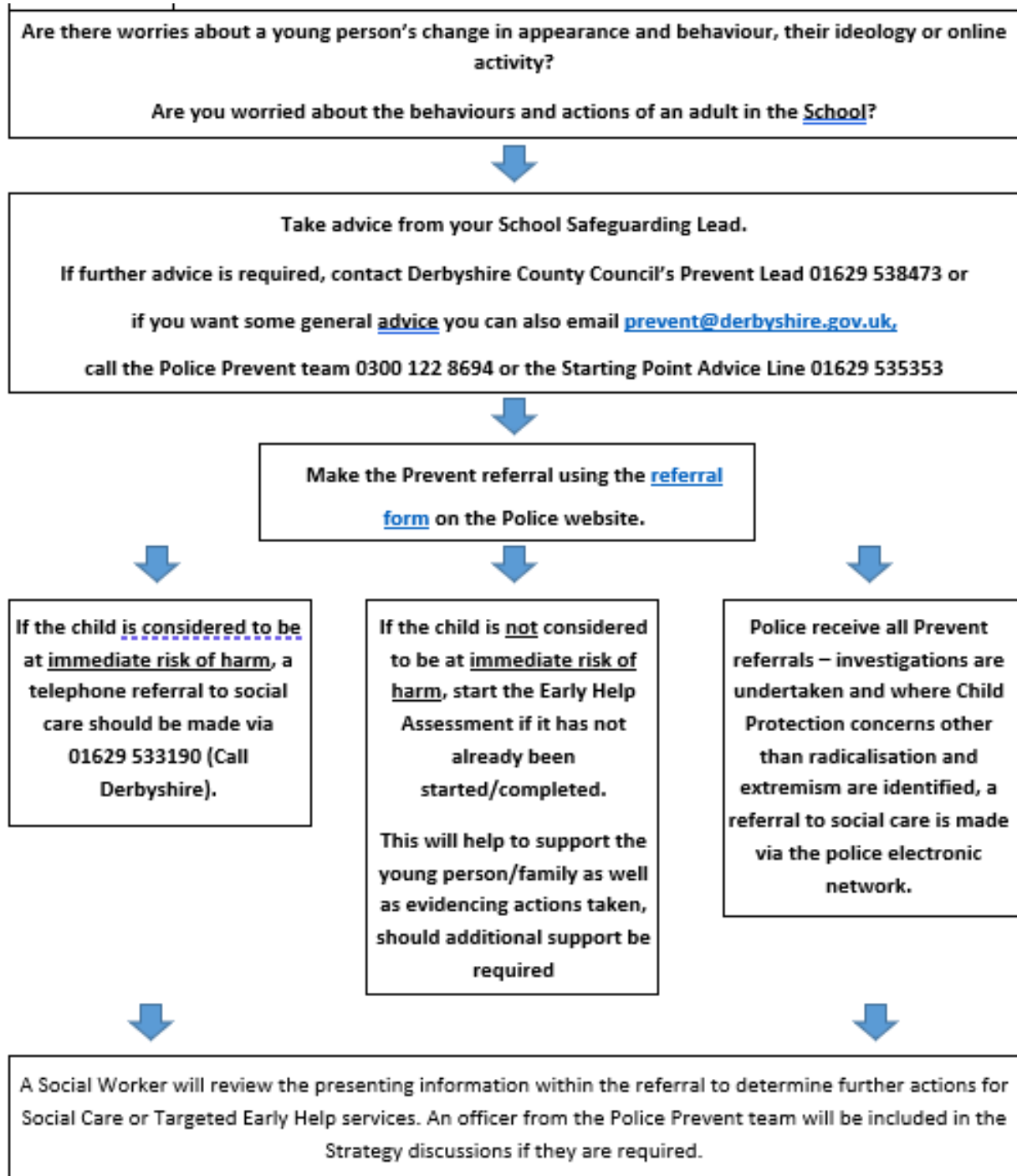
The Head Teacher/ Principal will report on and discuss progress within the School/Educational setting to the Governing Body on an annual basis.

A record of the minutes is recorded on the School Governing Report covering the discussion on the Policy of Extremism, Radicalisation, and the protection of British Values, detailing how proactive the school is in ensuring this policy is reflected in the school's ethos and curriculum.



Appendix A

Prevent Referrals – Pathway



NB – Whilst the Police Prevent Team can recognise vulnerabilities and support the safeguarding process, they are primarily focused on Counter Terrorism and Domestic Extremism risk. Please make sure other safeguarding measures (including Early help Assessments) are progressed in a timely manner.