

Charles Darwin	Theory of evolution by natural selection.	Individual organisms within a particular species show a wide range of variation for a characteristic.
		Individual most suited to the environment are more likely to breed successfully.
		Characteristics enable individuals to survive are then passed on to the next generation.



Developed since its proposal from information gathered by other scientists.

Did much pioneering work on speciation but more evidence over time has led to our current understanding.

Theory of evolution (Biology only)

Evidence from around the world, experimentation, geology, fossils, discussion with other scientists (Alfred Wallace) lead to:

Charles Darwin 'On the Origin of the Species' (1859)	Published the theory of evolution by natural selection	Slowly accepted; challenged creation theory (God), insufficient evidence at time, mechanism of inheritance not yet known.
---	---	---

Both Darwin and Wallace's work contributed to the modern science of genetics and 'molecular biology'.

The full human classification

Carl Linnaeus classified living things	Kingdom	Animalia
	Phylum	Chordata
	Class	Mammalia
	Order	Primates
	Family	Hominidae
	Genus	<i>Homo</i>
	Species	<i>sapiens</i>

Classification of living organisms

The five kingdoms are animals, plants, fungi, protista, prokaryotes

Carl Woese
3 domains instead of kingdoms based on genetic analysis.
Archaea (primitive bacteria), true bacteria, eukaryota.

EDEXCEL GCSE NATURAL SELECTION AND GENETIC MODIFICATION PART 1

Alfred Wallace	Independently proposed the theory of evolution by natural selection	Published joint writings with Darwin in 1858.
		Worked worldwide gathering evidence.
		Best know for work on warning colouration in animals and his theory of speciation.

Human evolution

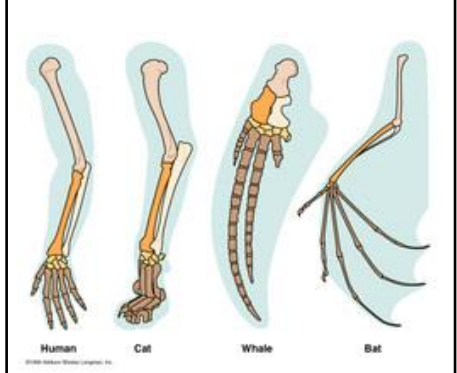
Evidence for human evolution	
Fossils	Stone tools
<i>Ardipithecus ramidus</i> 'Ardi' from 4.4 million years ago	Earliest simple stone tools from 3.3 million years ago.
<i>Australopithecus afarensis</i> 'Lucy' from 3.2 million years ago	The age of different layers of rock can be dated. Stone tools found in those layers are the same age.
Leakey's discovery of <i>Homo habilis</i> from 1.6 million years ago	

Evidence for evolution

Evidence for evolution from anatomy (Biology only)

The pentadactyl limb

Darwin suggested that the five finger (pentadactyl) limb found across many vertebrates suggest a common ancestor.



Selective breeding

Selective breeding

Choosing parents with the desired characteristics from a mixed population

Chosen parents are bred together.
 ↓
 From the offspring those with desired characteristics are bred together.
 ↓
 Repeat over several generations until all the offspring show the desired characteristics.

Choosing characteristics

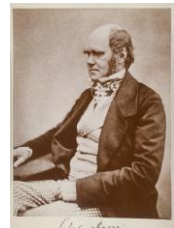
Desired characteristics are chosen for usefulness or appearance

Disease resistance in food crops.	
Animals which produce more meat or milk.	
Domestic dogs with a gentle nature.	
Large or unusual flowers.	

Antibiotic resistant bacteria	Mutations produce antibiotic resistant strains which can spread	Resistant strains are not killed.
		Strain survives and reproduces.
		People have no immunity to strain and treatment is ineffective.

Antibiotic resistance in bacteria provides evidence for evolution.

Evolution is widely accepted. Evidence is now available as it has been shown that characteristics are passed on to offspring in genes.



Theory of evolution by natural selection.

- Individual organisms within a particular species show a wide range of variation for a characteristic.
- Individual most suited to the environment are more likely to breed successfully.
- Characteristics enable individuals to survive are then passed on to the next generation.

Developed since its proposal from information gathered by other scientists.

Did much pioneering work on speciation but more evidence over time has led to our current understanding.

Theory of evolution (Biology only)

Evidence from around the world, experimentation, geology, fossils, discussion with other scientists (Alfred Wallace) lead to:

Published the theory of evolution by natural selection

Slowly accepted; challenged creation theory (God), insufficient evidence at time, mechanism of inheritance not yet known.

Independently proposed the theory of evolution by natural selection

- Published joint writings with Darwin in 1858.
- Worked worldwide gathering evidence.
- Best know for work on warning colouration in animals and his theory of speciation.

Human evolution

Fossils	Stone tools
<i>Ardipithecus ramidus</i> 'Ardi' from 4.4 million years ago	Earliest simple stone tools from 3.3 million years ago.
<i>Australopithecus afarensis</i> 'Lucy' from 3.2 million years ago	The age of different layers of rock can be dated. Stone tools found in those layers are the same age.
Leakey's discovery of <i>Homo habilis</i> from 1.6 million years ago	

EDEXCEL GCSE NATURAL SELECTION AND GENETIC MODIFICATION PART 1

Both Darwin and Wallace's work contributed to the modern science of genetics and 'molecular biology'.

Classification of living organisms

The full human classification

Kingdom	Animalia
Phylum	Chordata
Class	Mammalia
Order	Primates
Family	Hominidae
Genus	<i>Homo</i>
Species	<i>sapiens</i>

The five kingdoms are animals, plants, fungi, protista, prokaryotes

Carl Woese

3 domains instead of kingdoms based on genetic analysis.

Archaea (primitive bacteria), true bacteria, eukaryota.

Antibiotic resistance in bacteria provides evidence for evolution.

Mutations produce antibiotic resistant strains which can spread

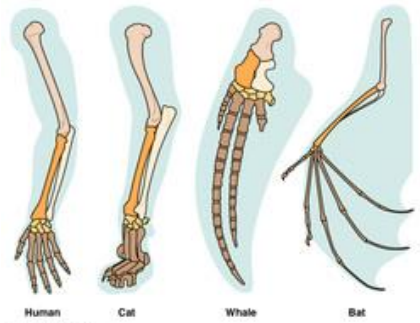
- Resistant strains are not killed.
- Strain survives and reproduces.
- People have no immunity to strain and treatment is ineffective.

Evolution is widely accepted. Evidence is now available as it has been shown that characteristics are passed on to offspring in genes.

Evidence for evolution

The pentadactyl limb

Darwin suggested that the five finger (pentadactyl) limb found across many vertebrates suggest a common ancestor.



Selective breeding

Choosing parents with the desired characteristics from a mixed population

- Chosen parents are bred together.
- From the offspring those with desired characteristics are bred together.
- Repeat over several generations until all the offspring show the desired characteristics.

Desired characteristics are chosen for usefulness or appearance

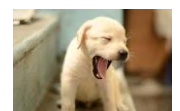
Disease resistance in food crops.



Animals which produce more meat or milk.

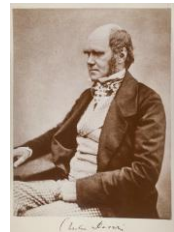


Domestic dogs with a gentle nature.



Large or unusual flowers.





Individual organisms within a particular species show a wide range of variation for a characteristic.

Individual most suited to the environment are more likely to breed successfully.

Characteristics enable individuals to survive are then passed on to the next generation.

Developed since its proposal from information gathered by other scientists.

Did much pioneering work on speciation but more evidence over time has led to our current understanding.

Evidence from around the world, experimentation, geology, fossils, discussion with other scientists (Alfred Wallace) lead to:

Theory of evolution (Biology only)

Slowly accepted; challenged creation theory (God), insufficient evidence at time, mechanism of inheritance not yet known.

Both Darwin and Wallace's work contributed to the modern science of genetics and 'molecular biology'.

Published joint writings with Darwin in 1858.

Worked worldwide gathering evidence.

Best know for work on warning colouration in animals and his theory of speciation.

Human evolution

<i>Ardipithecus ramidus</i> 'Ardi' from 4.4 million years ago	Earliest simple stone tools from 3.3 million years ago.	
<i>Australopithecus afarensis</i> 'Lucy' from 3.2 million years ago		The age of different layers of rock can be dated. Stone tools found in those layers are the same age.
Leakey's discovery of <i>Homo habilis</i> from 1.6 million years ago		

EDEXCEL GCSE NATURAL SELECTION AND GENETIC MODIFICATION PART 1

The full human classification

Classification of living organisms

	Animalia
	Chordata
	Mammalia
	Primates
	Hominidae
	<i>Homo</i>
	<i>sapiens</i>

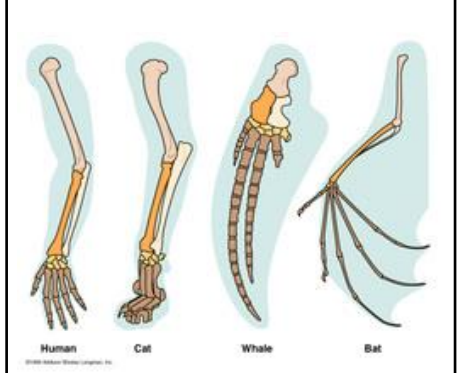
The five kingdoms are animals, plants, fungi, protista, prokaryotes

Carl Woese

	Archaea (primitive bacteria), true bacteria, eukaryota.
--	---

Evidence for evolution

Darwin suggested that the five finger (pentadactyl) limb found across many vertebrates suggest a common ancestor.



Selective breeding

Chosen parents are bred together.

↓

From the offspring those with desired characteristics are bred together.

↓

Repeat over several generations until all the offspring show the desired characteristics.

Disease resistance in food crops.	
Animals which produce more meat or milk.	
Domestic dogs with a gentle nature.	
Large or unusual flowers.	

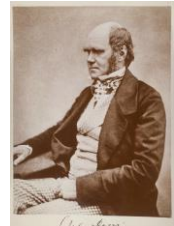
Resistant strains are not killed.

Strain survives and reproduces.

People have no immunity to strain and treatment is ineffective.

Antibiotic resistance in bacteria provides evidence for evolution.

Evolution is widely accepted. Evidence is now available as it has been shown that characteristics are passed on to offspring in genes.



Developed since its proposal from information gathered by other scientists.

Did much pioneering work on speciation but more evidence over time has led to our current understanding.

Evidence from around the world, experimentation, geology, fossils, discussion with other scientists (Alfred Wallace) lead to:

Theory of evolution (Biology only)

EDEXCEL GCSE NATURAL SELECTION AND GENETIC MODIFICATION PART 1

Both Darwin and Wallace's work contributed to the modern science of genetics and 'molecular biology'.

The full human classification

Classification of living organisms

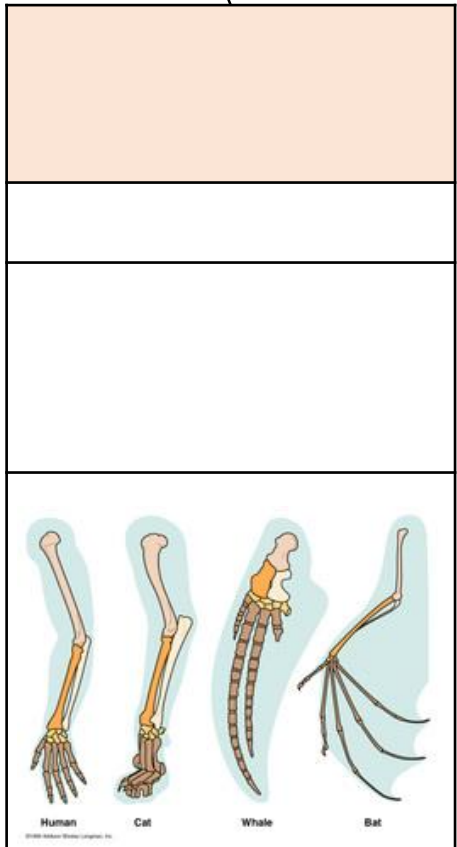
The five kingdoms are animals, plants, fungi, protista, prokaryotes

Carl Woese

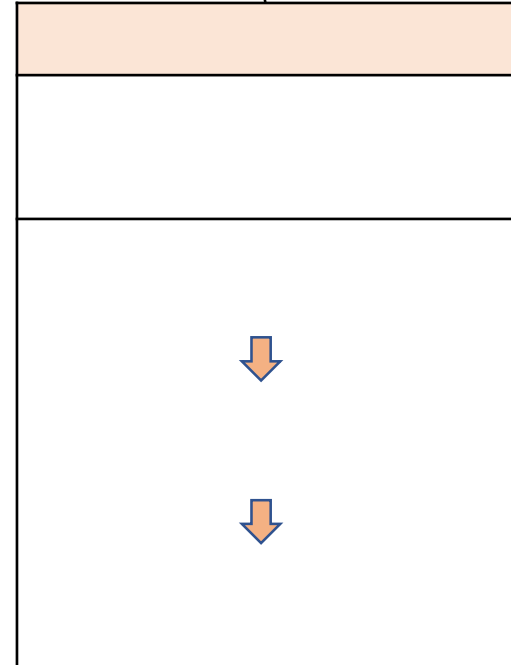
Antibiotic resistance in bacteria provides evidence for evolution.

Evolution is widely accepted. Evidence is now available as it has been shown that characteristics are passed on to offspring in genes.

Evidence for evolution



Selective breeding



Human evolution
