

Myth Busting Migration

People living in poverty are severely disadvantaged not just economically, but also socially, lacking opportunities and access to their basic rights. This can lead to migration both internally and externally.

Absolute poverty

- Level of poverty below which no-one anywhere in the world should ever fall
- Same in every country
- Refers to those living on less than US\$1–US\$2 a day.

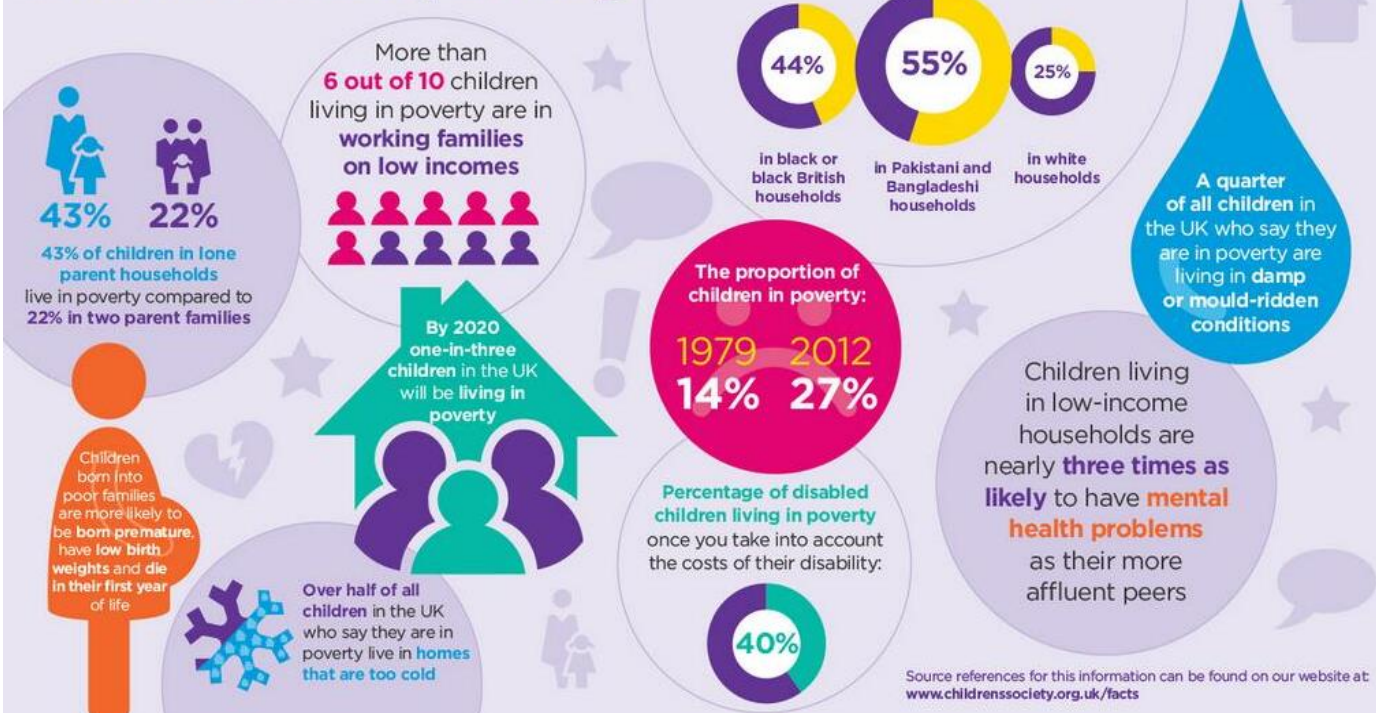


Relative poverty

- Differs between countries and over time
- Depends on the society in which the individual lives
- Individuals excluded from ordinary living compared to the average individual or family



Ten facts about poverty



Definitions:

Migration is the movement of people from one place to another which results in a **permanent** change of home.

Types of migration:

- **Internal-** movement within a country, e.g. rural to urban migration
- **External-** movement between countries, e.g. international migration

Immigration

- the movement of people **into** an area

Emigration

- the movement of people **out of** an area

Net Immigration

- more people enter than leave

Net Emigration

- more people leave than enter

People migrate for two reasons:

1. To move away from things they dislike. These are called **push factors**.
2. To move towards things they do like. These are called **pull factors**.

Migration can be **forced** or **voluntary**



Migration in the Media



Immigrants to the UK since 2000 have made a "substantial" contribution to public finances, a report says.

BRITAIN MUST BAN MIGRANTS



Without immigration, island nations such as the UK simply wouldn't exist.

If you argue that there should be fewer foreigners, you are also making the argument that we shouldn't be free to live and work abroad ourselves.

Britain has a problem: It wants fewer immigrants, but its economy desperately needs more to harvest the country's crops and build homes for its citizens.

The UK is an international country with ties all over the world. Over 5.5 million Brits currently live abroad permanently. As we can go to live and work in other countries, why should others not be allowed to work in ours?

The NHS says there are over 17,000 vacant nursing jobs in the UK. The overburdened system, described by the British Red Cross as facing a "humanitarian crisis," already relies on 33,000 nurses from the EU.

Taxes will have to rise if Brexit restricts EU workers because they pay far more to the public purse than British-born residents, a study warns today. Migrants from the EU contribute £2,300 more each year than the average adult, the analysis for the government has found.

Bright lights perception

Reality



Shanty Towns

Urbanisation- happening fastest in LIDCs

Definition: An increase in the proportion of people living in urban areas, compared with those living in rural areas.

Why?

1. Rural-urban migration- movement of people from the countryside to the city
2. Natural increase (high birth rate, low death rate)= internal growth

Shanty Towns/Favelas

- Overcrowded
- Poorly built infrastructure
- Lack of clean water
- Poor sanitation
- Illegal electricity supplies
- Spread of disease
- Lack of waste collection
- No sewage system
- High crime rate



Regeneration- Shanty towns can be improved to raise the quality of life for inhabitants.

- Road structure
- Sewage system
- Electricity supplies
- Healthcare centre and schools

